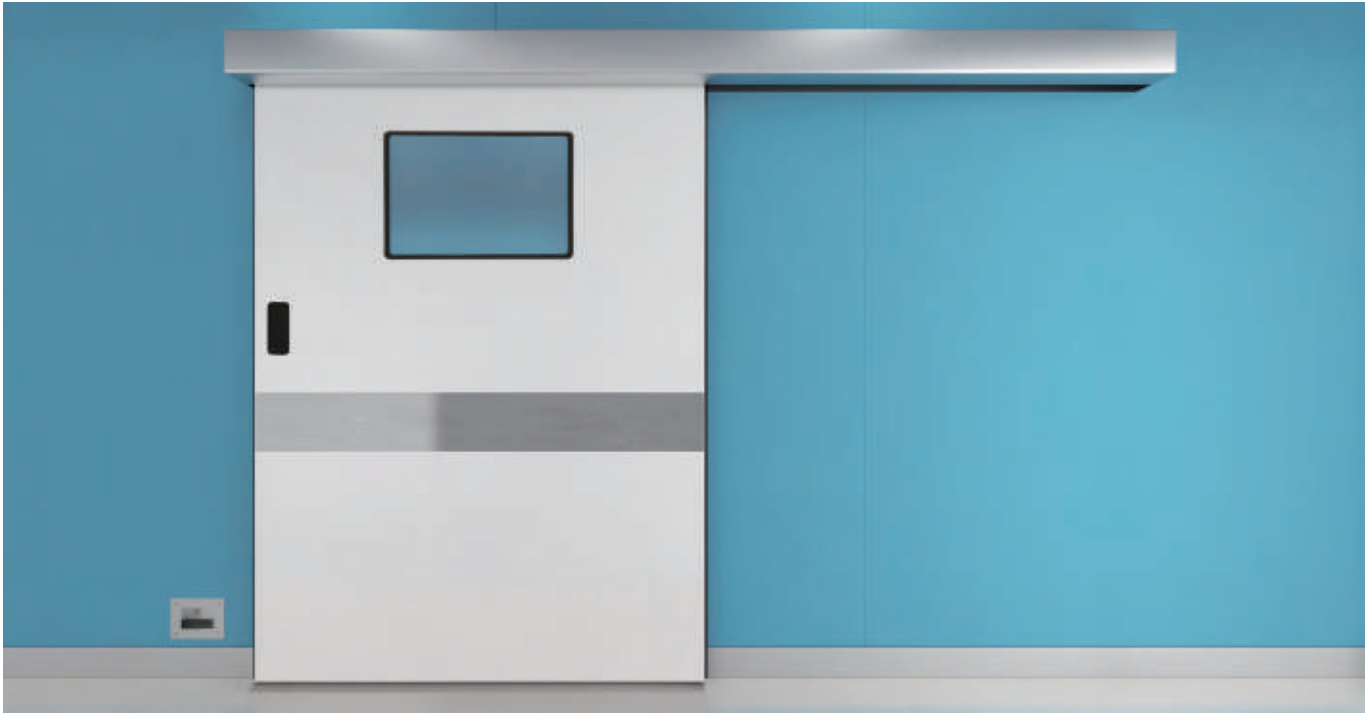


NAX

NABCO Hermetic Door

NABCO's hermetic door with high air tightness, aesthetic and safety





NABCO's new hermetic door with **high air tightness, aesthetic and safety**.
 With the **original hermetic mechanism**, NAX provides high air tightness
 in a optimal way for various scenes.

Air Tightness

- High class of air tightness
 BS EN12207 Class 4 JIS A4702: Class A-4

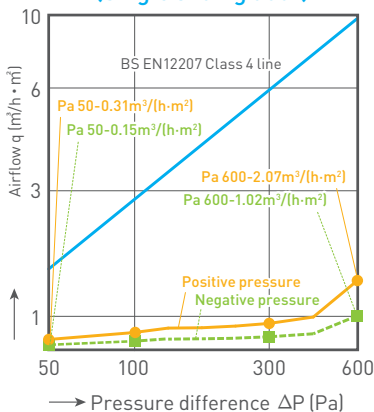
Aesthetic

- Smallest header size in the industry
- Wide range of door leaves and handle (*Pls. refer to back page)

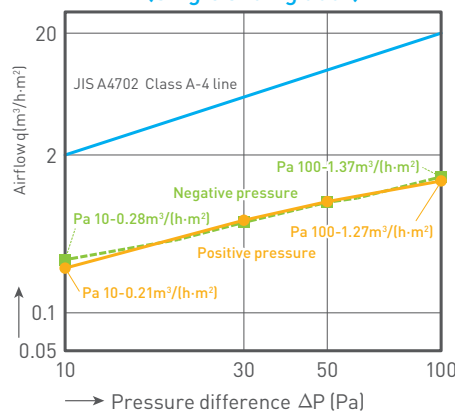
Safety

- Possible to be fully opened without any clearance left
- Easy to open manually in case of a power failure

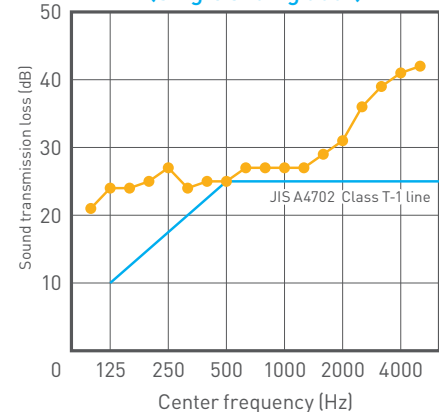
【BS EN12207】
 NAX Airtight performance
 (Single sliding door)



【JIS A4702】
 NAX Airtight performance
 (Single sliding door)



【JIS A4702】
 NAX Sound insulation performance
 (Single sliding door)

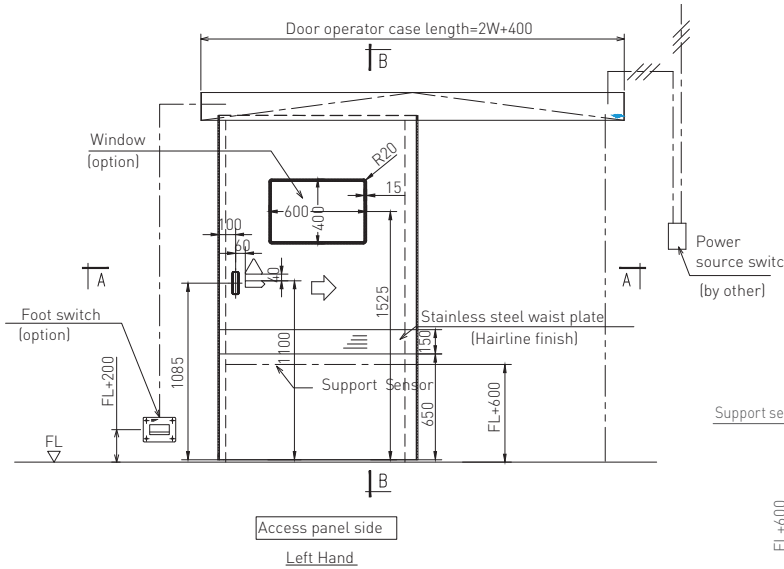


Example of use

- **Operating room** Requires high air tightness
- **Radiotherapy room** Requires X-ray shield
- **Food processing factory** Requires hygiene management (HACCP)
- **Warehouse/Factory** Requires air conditioning
- **Conference room** Requires sound insulation

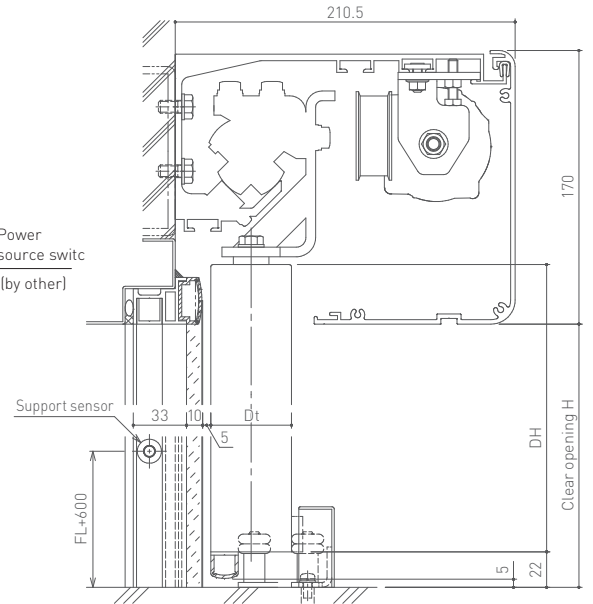
Dimension

● Elevation



Unit: mm

● Section



*The section shows when the door is fully opened

*Handle, window, waist plate, kick plate and lock are optional

Specifications

| Use applications | | Air tightness + Sound insulation | | Air tightness + Sound insulation + X-ray shield | |
|---------------------|------------|--|-------------|---|-----------------|
| | | Aluminum/Stainless steel/Glass | Aluminum | Stainless steel | Stainless steel |
| Door leaf | | Aluminum/Stainless steel/Glass | | Aluminum | Stainless steel |
| Door type | | Single | Bi parting | Single | Single |
| Clear opening (mm) | Width (W) | 700 - 2000 | 1200 - 2800 | 700 - 1600 | 700 - 1100 |
| | Height (H) | 1900 - 2500 | 1900 - 2500 | 1900 - 2500 | 1900 - 2500 |
| Max weight | | 150kg | | | |
| Opening speed | | up to 0.7m/s | | | |
| Hold open time | | adjustable | | | |
| Ambient temperature | | -10°C - 50°C | | | |
| Power supply | | 230VAC +6/-10% 50/60Hz Note: with transformer specified by NABCO | | | |
| Power consumption | | 45Wh | | | |
| Relative humidity | | 20% - 85% RH | | | |
| Air permeability | | Class 4 (BS EN12207)*1 A-4 (JIS A4702) | | | |
| Sound insulation | | T-1 (JIS A4702)*2 | | T-1 (JIS A4702) | |
| X-ray shield | | — | | ○ (Lead plate 2mm) | |
| Electric lock | | — | | ○ | |

*1 Class 4 (BS EN12207) is applicable to single sliding door only.

*2 The type of glass door leaf has T-2 class of sound insulation.

If T-2 class is required for aluminum/stainless door leaf, please contact our sales distributor.

Door leaf options

4 types of door leaves are selectable to suit your environment

Aluminum



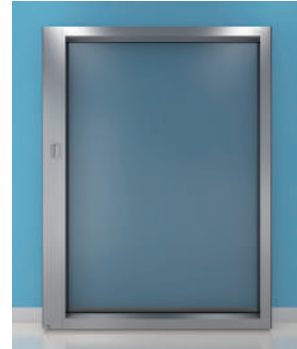
Stainless steel



High Pressure Laminate



Glass

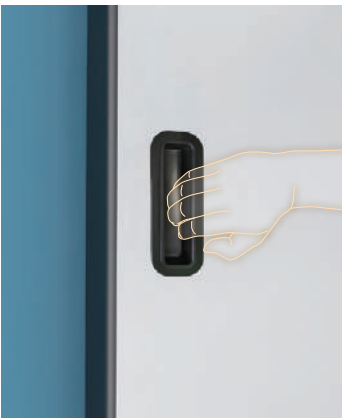


Note: The other door materials can be used

Handle options

3 types of handles are selectable in case of power failure

Recessed handle



Tubular handle



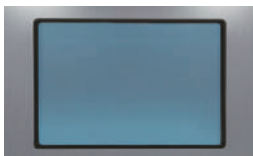
Lever handle



Window options

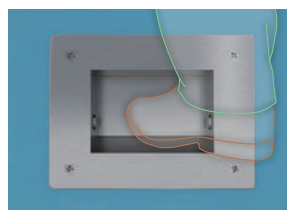
Flat frame prevents the accumulation of dust

Double-sided flat frame



Detection device options

Foot switch



For hands-free opening

Touch-less switch



For touch-less opening

Nabtesco Corporation

Accessibility Innovations Company

Address : JA Kyosai Bldg., 7-9,
Hirakawacho 2-chome,
Chiyoda-ku, Tokyo,
102-0093, Japan

Phone : +81(0)3-5213-1157
Fax : +81(0)3-5213-1173

<http://nabco.nabtesco.com/en/>



ISO9001 / ISO14001 Certified



For further details, contact:

All specifications herein are subject to change without notice
CAT. No. D666 0406 2312 01SE